

# ASSI E SEMIASSI A SEZIONE PIENA

AXLE AND STUBAXLE SOLID BEAM

ACHSEN UND ACHSTUMMELN MASSIVACHSKÖRPER

**Ampia serie di assali con portata da 500 kg fino a oltre 30.000 kg. La più ampia serie di assali equipaggiabili con freni agricoli e industriali, tutti omologati CE e secondo le principali normative nazionali. Robustezza, longevità, ridotta manutenzione sono il frutto della ricerca e dei test di laboratorio ed in campo fianco a fianco con gli utilizzatori finali. La varietà dei modelli disponibili facilita la scelta del prodotto più adatto in ogni applicazione.**

Wide range of axles with capacities from 500 kg up to over 30,000 kg. The widest range of axles that can be equipped with agricultural and industrial brakes, all CE approved and according to the main national regulations. Sturdiness, longevity, reduced maintenance are the result of research and laboratory and field tests side by side with final users. The variety of available models makes it easier to choose the most suitable product for each application.

*Große Auswahl an Achsen mit Tragfähigkeiten von 500 kg bis über 30.000 kg. Die breiteste Auswahl an Achsen, die mit Landwirtschafts- und Industriebremsen ausgestattet werden können, alle CE-geprüft und gemäß den wichtigsten nationalen Vorschriften. Robustheit, Langlebigkeit und reduzierter Wartungsaufwand sind das Ergebnis von Forschung, Labor- und Feldtests Seite an Seite mit Endbenutzern. Die Vielfalt der verfügbaren Modelle erleichtert die Auswahl des am besten geeigneten Produkts für jede Anwendung.*





# IDENTIFICAZIONE

IDENTIFICATION / KENNZEICHNUNG

Axles - Stubaxles **A A1 UA 1 VC N001**  
 Steering axles **C7 A1 UA 1 VC N001**

**A = ASSE, Axle, Achse**

**S = SEMIASSE, Stubaxle, Achsstummel**

**B..., C... = ASSE STERZANTE, Steering axle, Lenkachse**

**CARREGGIATA, RIFERITA A RUOTA SINGOLA ETO**  
 Track, referred to single wheel ETO  
*Spurweite, für Einfachbereifung ETO*

**CODICE ESECUZIONI SPECIALI**  
 Code for special fitting  
*Typenbezeichnung für Sonderausführung*

**CODICE CORPO ASSE**  
 Beam type code, *Achskörperbezeichnung*

<b>30 = 30 mm</b>	<b>31 = 30 mm</b>
<b>35 = 35 mm</b>	<b>36 = 35 mm</b>
<b>40 = 40 mm</b>	<b>41 = 40 mm</b>
<b>45 = 45 mm</b>	<b>46 = 45 mm</b>
<b>50 = 50 mm</b>	<b>51 = 50 mm</b>
<b>55 = 55 mm</b>	<b>56 = 55 mm</b>
<b>60 = 60 mm</b>	<b>61 = 60 mm</b>
<b>65 = 65 mm</b>	<b>66 = 65 mm</b>
<b>70 = 70 mm</b>	<b>71 = 70 mm</b>
<b>80 = 80 mm</b>	<b>81 = 80 mm</b>
<b>90 = 90 mm</b>	<b>91 = 90 mm</b>
<b>A0 = 100 mm</b>	<b>C0 = 100 mm</b>
<b>A5 = 150 mm</b>	

**TIPO DI FRENO**  
 Brake type, *Bremstyp*

**TIPO ASSE**  
 Axle type, *Achstyp*

**ATTACCO RUOTA**  
 P.C.D.  
*Radanschluss*

<b>B4, B = 4 Fori, Holes, Löcher</b>	<b>62 / 95</b>
<b>F4, 4 = 4 Fori, Holes, Löcher</b>	<b>58 / 98</b>
<b>G4, A = 4 Fori, Holes, Löcher</b>	<b>60 / 100</b>
<b>T4, C = 4 Fori, Holes, Löcher</b>	<b>84 / 130</b>
<b>O5, 5 = 5 Fori, Holes, Löcher</b>	<b>94 / 140</b>
<b>G5, G = 5 Fori, Holes, Löcher</b>	<b>66 / 112</b>
<b>O6, 6 = 6 Fori, Holes, Löcher</b>	<b>160 / 205</b>
<b>O8, 8 = 8 Fori, Holes, Löcher</b>	<b>220 / 275</b>
<b>10, 1 = 10 Fori, Holes, Löcher</b>	<b>280 / 335</b>
<b>1R, R = 10 Fori, Holes, Löcher</b>	<b>175.8 / 225</b>

# ASSI E SEMIASSI A SEZIONE PIENA

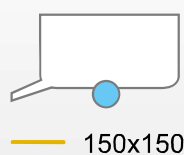
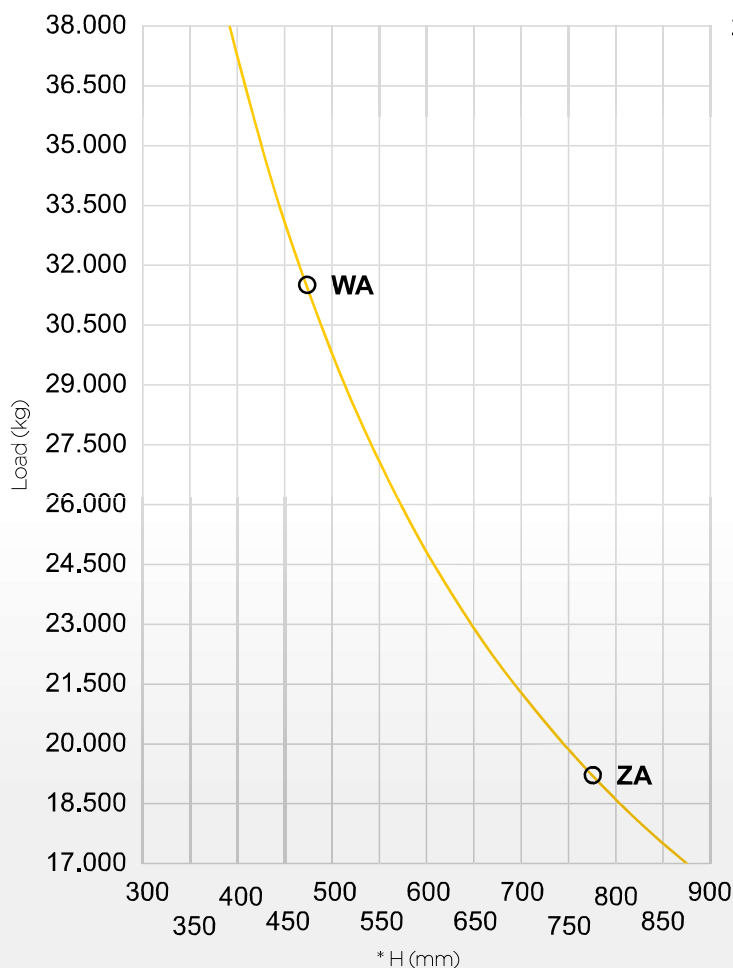
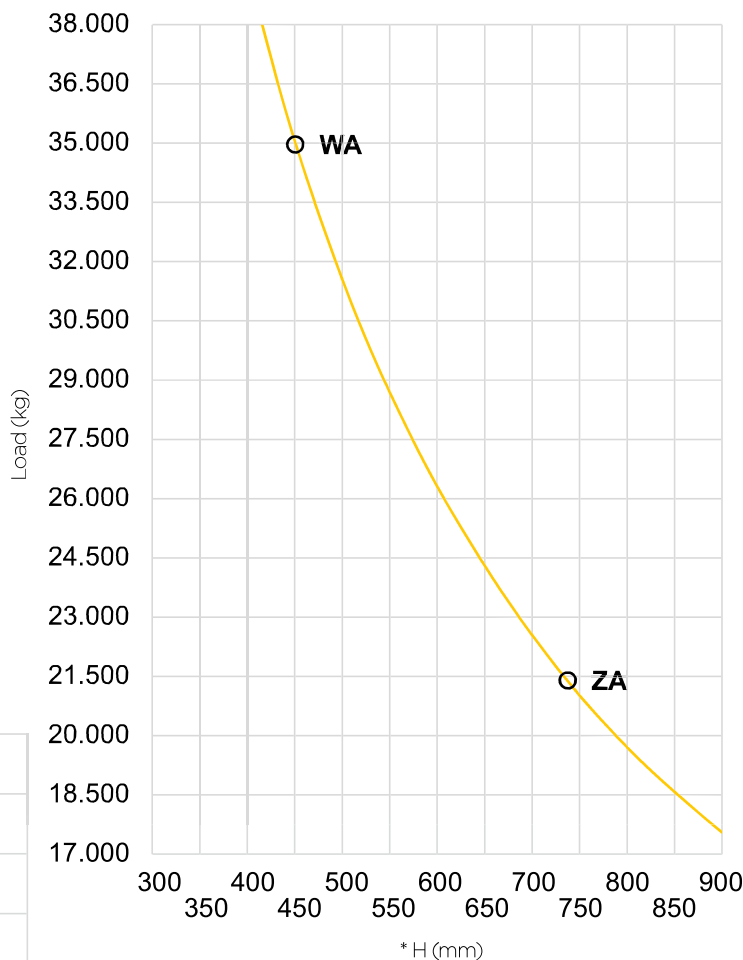
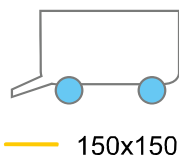
AXLE AND STUBAXLE SOLID BEAM / ACHSEN UND ACHSTUMMELN MASSIVACHSKÖRPER

## PORTATE MASSIME AMMESSE PER CORPO ASSE

MAXIMUM CARRYING CAPACITIES OF THE AXLE BEAM  
 MAX. ZULÄSSIGE TRAGFÄHIGKEIT DES ACHSKÖRPERS

- **Velocità massima:**
- **Speed limit:**
- **Maximale Geschwindigkeit:**

25 KM/H



\* vedi "USO CORRETTO DEL CATALOGO"  
 \* see "USERS' GUIDE"  
 \* siehe "KORREKTER GEBRAUCH DES HANDBUCHES"

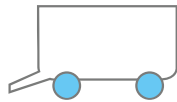
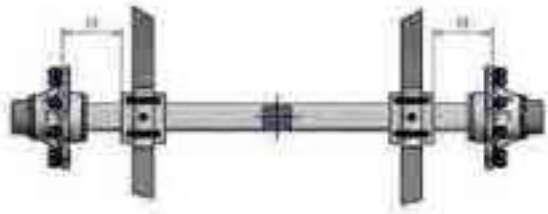


## PORTATE MASSIME AMMESSE PER CORPO ASSE

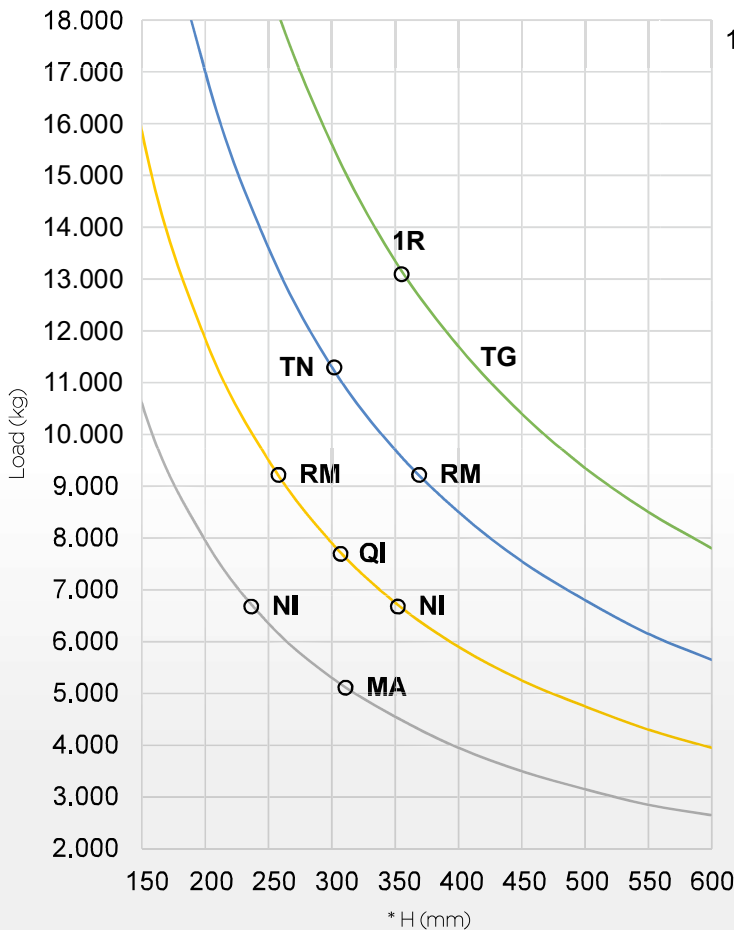
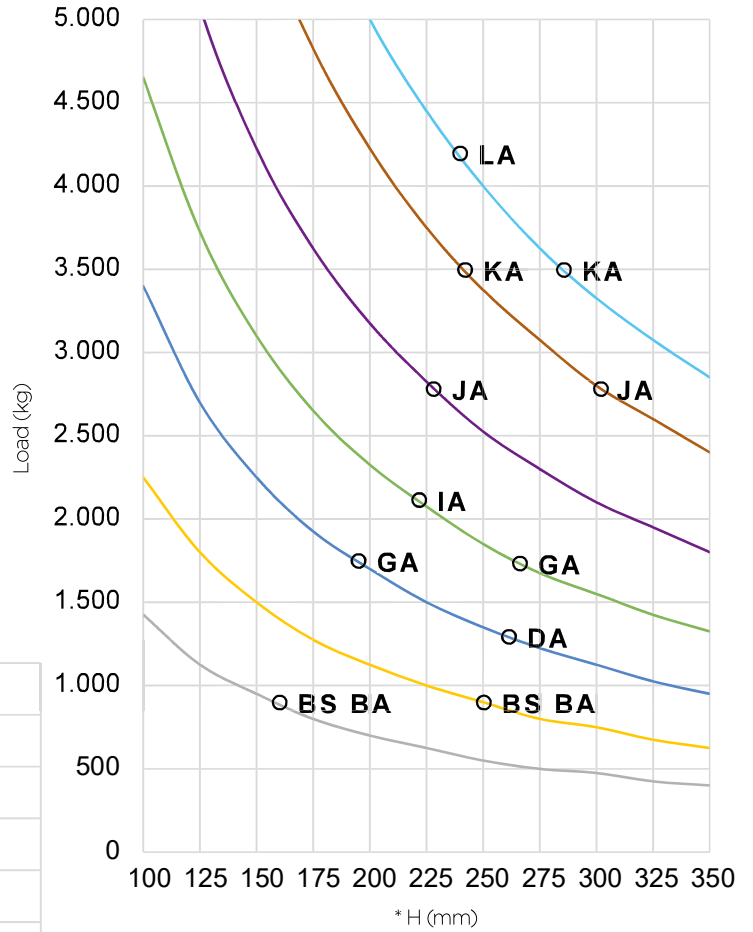
MAXIMUM CARRYING CAPACITIES OF THE AXLE BEAM  
 MAX. ZULÄSSIGE TRAGFÄHIGKEIT DES ACHSKÖRPERS

- **Velocità massima:**
- **Speed limit:**
- **Maximale Geschwindigkeit:**

40 KM/H



- 60x 0
- 55x 5
- 50x 0
- 45x 5
- 40x 0
- 35x 5
- 30x 0



- 100x 00
- 90x 0
- 80x 0
- 70x 0

\* vedi "USO CORRETTO DEL CATALOGO"  
 \* see "USERS' GUIDE"

\* siehe "KORREKTER GEBRAUCH DES HANDBUCHES"

# ASSI E SEMIASSI A SEZIONE PIENA

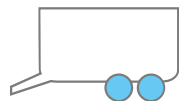
AXLE AND STUBAXLE SOLID BEAM / ACHSEN UND ACHSTUMMELN MASSIVACHSKÖRPER

## PORTATE MASSIME AMMESSE PER CORPO ASSE

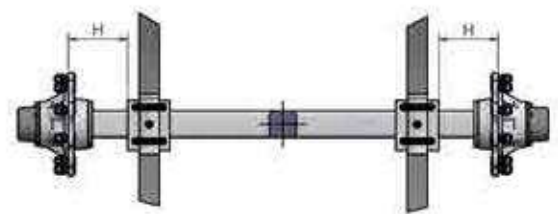
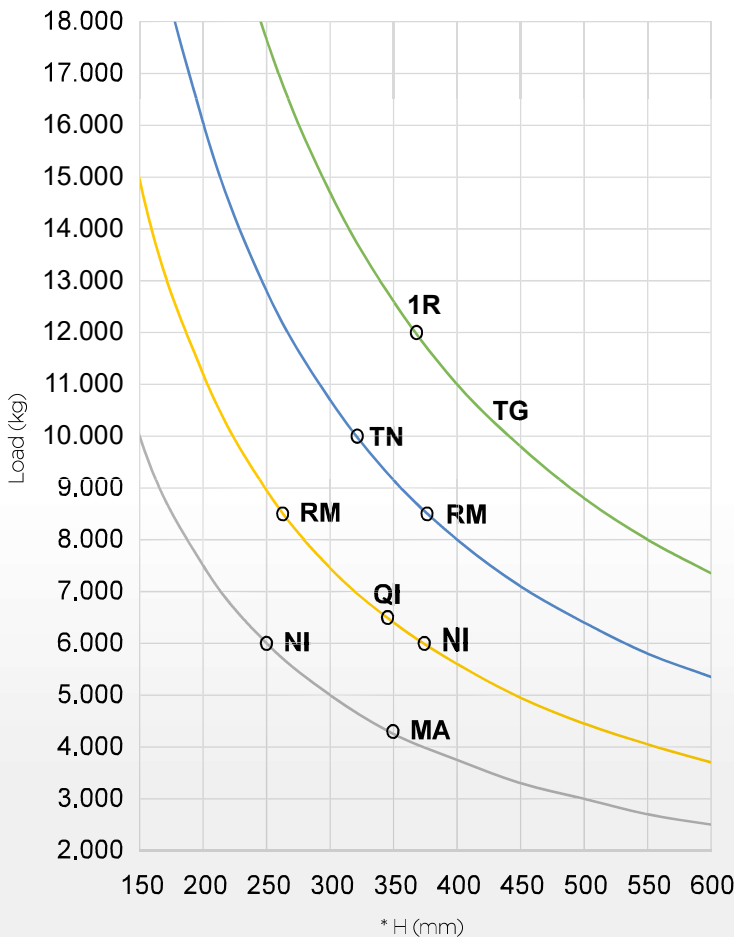
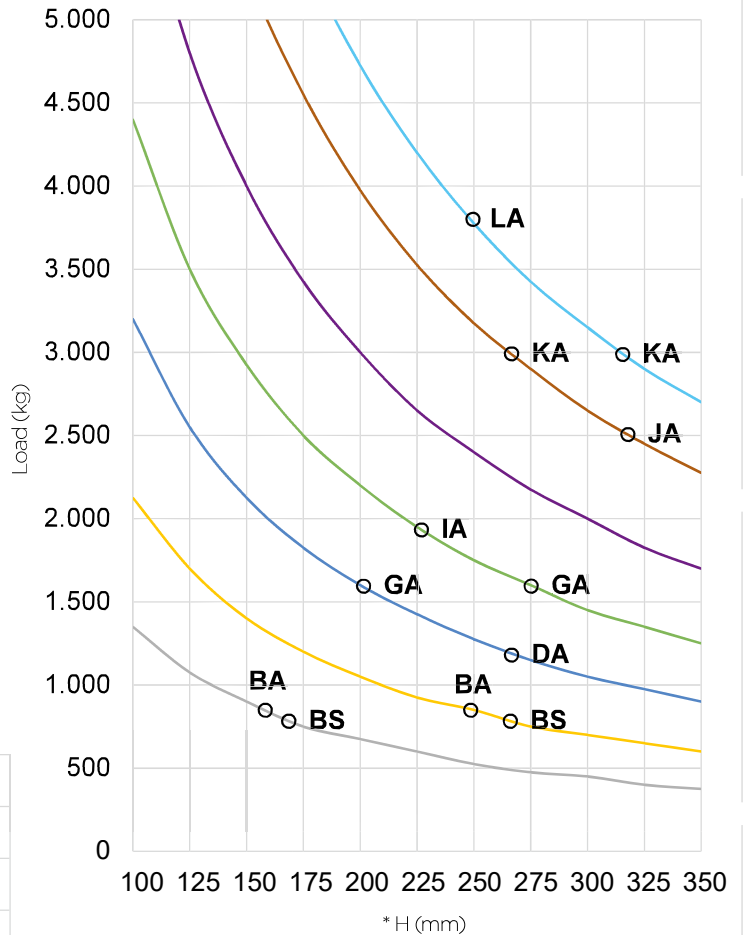
MAXIMUM CARRYING CAPACITIES OF THE AXLE BEAM  
 MAX. ZULÄSSIGE TRAGFÄHIGKEIT DES ACHSKÖRPER

- Velocità massima:  
 • Speed limit:  
 • Maximale Geschwindigkeit:

40 KM/H



- 60x 0
- 55x 5
- 50x 0
- 45x 5
- 40x 0
- 35x 5
- 30x 0

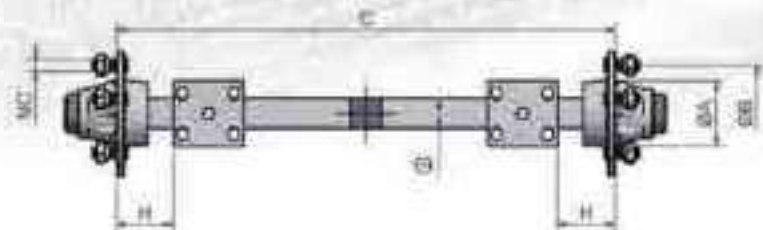


- 100x 00
- 90x 0
- 80x 0
- 70x 0

\* vedi "USO CORRETTO DEL CATALOGO"

\* see "USERS' GUIDE"

\* siehe "KORREKTER GEBRAUCH DES HANDBUCHES"



## ASSI SENZA FRENO

UNBRAKED AXLES/ LAUFACHSEN

CODICE Code Code	QUADRO Square Vkt  □ (mm)	SBALZO Overhang Überhang  H (mm)	PORTATA (KG) CON RUOTA ETO, R MAX. 600MM Capacity (kg) with tyre ETO, R max. 600mm Achslast (kg) mit Reifen ETO, R max. 600mm								ATTACCO p.c.d. Radanschluss		
			25 km/h		40 km/h		60 km/h		80 km/h		NC	ØA (mm)	ØB (mm)
A35BSC00...	35	235	950	850	900	800	800	730	-	-	4 M16	84	130
A35BAB00...	35	235	1100	950	900	850	850	770	-	-	4 M12	62	95
A35BAC00...	35	235	1100	950	900	850	850	770	-	-	4 M16	84	130
A35BAA00...	35	235	1100	950	900	850	850	770	-	-	4 M12	60	100
A35BA400...	35	235	1100	950	900	850	850	770	-	-	4 M12	58	98
A40DAB00...	40	245	1450	1300	1300	1200	1200	1100	-	-	4 M12	62	95
A40DAA00...	40	245	1450	1300	1300	1200	1200	1100	-	-	4 M12	60	100
A40DA400...	40	245	1450	1300	1300	1200	1200	1100	-	-	4 M12	58	98
A40GAC00...	40	180	1900	1700	1750	1600	1600	1450	-	-	4 M16	84	130
A40GA500...	40	180	1900	1700	1750	1600	1600	1450	-	-	5 M16	94	140
A40GAG00...	40	180	1900	1700	1750	1600	1600	1450	-	-	5 M14	66	112
A45IAC00...	45	205	2500	2100	2100	1950	1950	1750	-	-	4 M16	84	130
A45GA500...	45	250	1900	1700	1750	1600	1600	1450	-	-	5 M16	94	140
A45GAG00...	45	250	1900	1700	1750	1600	1600	1450	-	-	5 M14	66	112
A45IA500...	45	205	2500	2100	2100	1950	1950	1750	-	-	5 M16	94	140
A50JA500...	50	210	3300	2800	2800	2500	2500	2250	-	-	5 M16	94	140
A50JA600...	50	210	3300	2800	2800	2500	2500	2250	-	-	6 M18	160	205
A55KA600...	55	225	4000	3500	3500	3000	3000	2750	-	-	6 M18	160	205
A60KA600...	60	270	4000	3500	3500	3000	3000	2750	-	-	6 M18	160	205
A60LA600...	60	225	4800	4200	4200	3800	3800	3500	-	-	6 M18	160	205
A70MA600...	70	290	6000	5100	5100	4300	4300	3850	-	-	6 M18	160	205
A70NA600...	70	220	7200	6700	6700	6000	6000	5400	-	-	6 M18	160	205
A70NA800...	70	220	7200	6700	6700	6000	6000	5400	-	-	8 M18	220	275

Le portate dei semiassi corrispondono alla metà delle portate degli assi di pari caratteristiche.

Le portate degli assali sono dipendenti dalla carreggiata, distanza degli appoggi e ruote impiegate nell'applicazione.

The capacities of the stubaxles correspond to the half of the capacities of the axles with same characteristics.

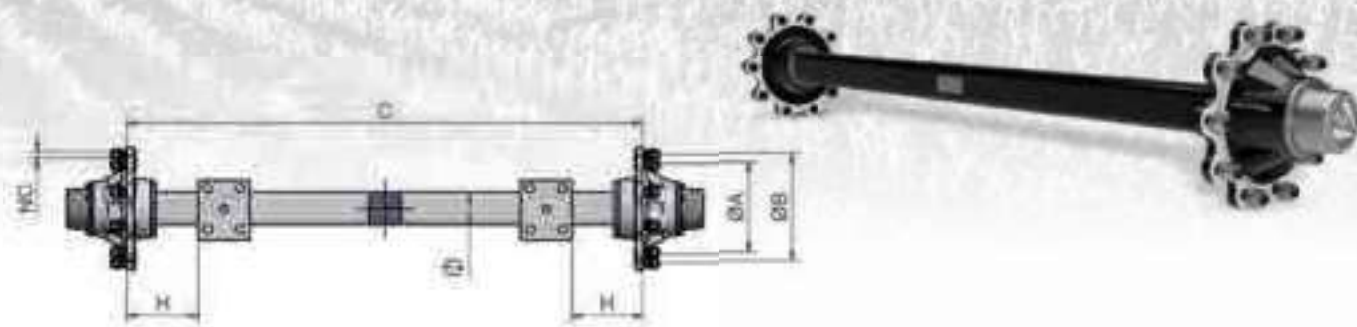
The capacity of the axles depend on track, spring centers and wheels used.

Die Achslast der Achsstummel entspricht der Hälfte der Achslast von Achsen des gleichen Typs.

Die Achslasten sind abhängig von der verwendeten Spur, Federmitte und Reifen der Achsen.

# ASSI E SEMIASSI A SEZIONE PIENA

## AXLE AND STUBAXLE SOLID BEAM / ACHSEN UND ACHSTUMMELN MASSIVACHSKÖRPER



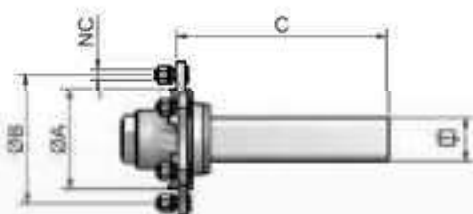
### ASSI SENZA FRENO

UNBRAKED AXLES / LAUFACHSEN

CODICE Code Code	QUADRO Square Vkt  □ (mm)	SBALZO Overhang Überhang  H (mm)	PORTATA (KG) CON RUOTA ETO, R MAX. 600MM Capacity (kg) with tyre ETO, R max. 600mm Achslast (kg) mit Reifen ETO, R max. 600mm								ATTACCO p.c.d. Radanschluss		
			25 km/h		40 km/h		60 km/h		80 km/h		NC	ØA (mm)	ØB (mm)
A70NI600...	70	220	7200	6700	6700	6000	6000	5400	5400	4800	6 M18	160	205
A70NI800...	70	220	7200	6700	6700	6000	6000	5400	5400	4800	8 M18	220	275
A80QI600...	80	290	8200	7400	7700	7000	7000	6300	6300	5700	6 M18	160	205
A80RM600...	80	240	10000	9000	9200	8500	8500	7700	7700	7000	6 M18	160	205
A80QI800...	80	290	8200	7400	7700	7000	7000	6300	6300	5700	8 M18	220	275
A80RM800...	80	240	10000	9000	9200	8500	8500	7700	7700	7000	8 M18	220	275
A90RM800...	90	345	10000	9000	9200	8500	8500	7700	7700	7000	8 M18	220	275
A90RMR00...	90	345	10000	9000	9200	8500	8500	7700	7700	7000	10 M22	175	225
A90TN800...	90	290	11800	10600	11000	10000	10000	9000	8900	8000	8 M20	220	275
A90TN100...	90	290	11800	10600	11000	10000	10000	9000	8900	8000	10 M22	280	335
AA01R800...	100	335	-	-	13000	12000	11700	10800	10600	9800	8 M20	220	275
AA01RR00...	100	335	-	-	13000	12000	11700	10800	10600	9800	10 M22	175	225
AA01R100...	100	335	-	-	13000	12000	11700	10800	10600	9800	10 M22	280	335
AA5ZA100...	150	745	21400	19200	20000	18000	18000	16200	16200	14500	10 M22	280	335
AA5WA100...	150	450	35000	31500	33000	30000	30000	27000	26700	24000	10 M24	280	335

### SEMIASSI SENZA FRENO

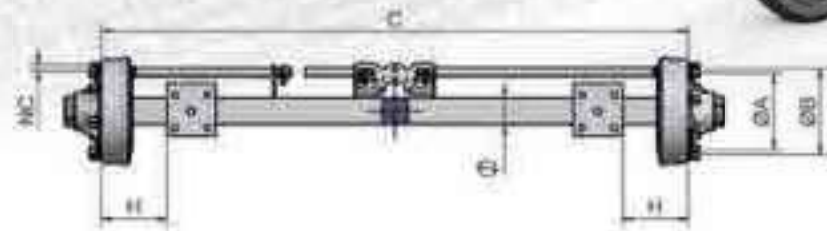
UNBRAKED STUBAXLES / LAUFACHSSTUMMEL



Le portate dei semiassi corrispondono alla metà delle portate degli assi di pari caratteristiche.  
Le portate degli assi sono dipendenti dalla carreggiata, distanza degli appoggi e ruote impiegate nell'applicazione.

The capacities of the stubaxles correspond to the half of the capacities of the axles with same characteristics.  
The capacity of the axles depend on track, spring centers and wheels used.

Die Achslast der Achsstummel entspricht der Hälfte der Achslast von Achsen des gleichen Typs.  
Die Achslasten sind abhängig von der verwendeten Spur, Federmitte und Reifen der Achsen.



## ASSI CON FRENO - MONOBLOCCO

BRAKED AXLES - SOLID DRUM / BREMSACHSEN - TROMMELNABE

CODICE Code Code	QUADRO Square Vkt  □ (mm)	SBALZO Overhang Überhang  H (mm)	PORTATA (KG) CON RUOTA ETO, R MAX. 600MM Capacity (kg) with tyre ETO, R max. 600mm Achslast (kg) mit Reifen ETO, R max. 600mm								ATTACCO p.c.d. Radanschluss		
			25 km/h		40 km/h		60 km/h		80 km/h		NC	ØA (mm)	ØB (mm)
<b>Freno / Brake / Bremse AA 14M 140x30</b>													
A30BABAA...	30	150	1100	950	900	850	-	-	-	-	4 M12	62	95
A30BA4AA...	30	150	1100	950	900	850	-	-	-	-	4 M12	58	98
A30BAAAA...	30	150	1100	950	900	850	-	-	-	-	4 M12	60	100
A35BABAA...	35	235	1100	950	900	850	-	-	-	-	4 M12	62	95
A35BA4AA...	35	235	1100	950	900	850	-	-	-	-	4 M12	58	98
A35BAAAA...	35	235	1100	950	900	850	-	-	-	-	4 M12	60	100
A40BABAA...	40	355	1100	950	900	850	-	-	-	-	4 M12	62	95
A40BA4AA...	40	355	1100	950	900	850	-	-	-	-	4 M12	58	98
A40BAAAA...	40	355	1100	950	900	850	-	-	-	-	4 M12	60	100
<b>Freno / Brake / Bremse BA 20M 200x40</b>													
A40DABBA...	40	245	1450	1300	1300	1200	-	-	-	-	4 M12	62	95
A40DAABA...	40	245	1450	1300	1300	1200	-	-	-	-	4 M12	60	100
A40DA4BA...	40	245	1450	1300	1300	1200	-	-	-	-	4 M12	58	98
A40GACBA...	40	180	1900	1700	1750	1600	-	-	-	-	4 M16	84	130
A40GA5BA...	40	180	1900	1700	1750	1600	-	-	-	-	5 M16	94	140
A45GA5BA...	45	250	1900	1700	1750	1600	-	-	-	-	5 M16	94	140
A45JA5BA...	45	205	2500	2100	2100	1950	-	-	-	-	5 M16	94	140
A50JA5BA...	50	210	3300	2800	2800	2500	-	-	-	-	5 M16	94	140
<b>Freno / Brake / Bremse CA 250 250x40</b>													
A45GAGCA..	45	180	1900	1700	1750	1600	1600	1450	-	-	5 M14	66	112
<b>Freno / Brake / Bremse DA 256E 250x60</b>													
A50JA5DA...	50	210	3300	2800	2800	2500	2500	2250	-	-	5 M16	94	140
A50JA6DA...	50	210	3300	2800	2800	2500	2500	2250	-	-	6 M18	160	205
A55JA5DA...	55	285	3300	2800	2800	2500	2500	2250	-	-	5 M16	94	140
A55JA6DA...	55	285	3300	2800	2800	2500	2500	2250	-	-	6 M18	160	205
A60LA6DA...	60	225	4800	4200	4200	3800	3800	3500	-	-	6 M18	160	205
A70MA6DA...	70	290	6000	5100	5100	4300	4300	3850	-	-	6 M18	160	205
<b>Freno / Brake / Bremse FK 306E 300x60</b>													
A60LA6FK...	60	225	4800	4200	4200	3800	3800	3500	-	-	6 M18	160	205
A70MA6FK...	70	290	6000	5100	5100	4300	4300	3850	-	-	6 M18	160	205
<b>Freno / Brake / Bremse FJ 306E 300x60</b>													
A70NA6FJ...	70	220	7200	6700	6700	6000	6000	5400	-	-	6 M18	160	205
A80QI6FJ...	80	290	8200	7400	7700	7000	7000	6300	-	-	6 M18	160	205

Le portate dei semiassi corrispondono alla metà delle portate degli assi di pari caratteristiche.

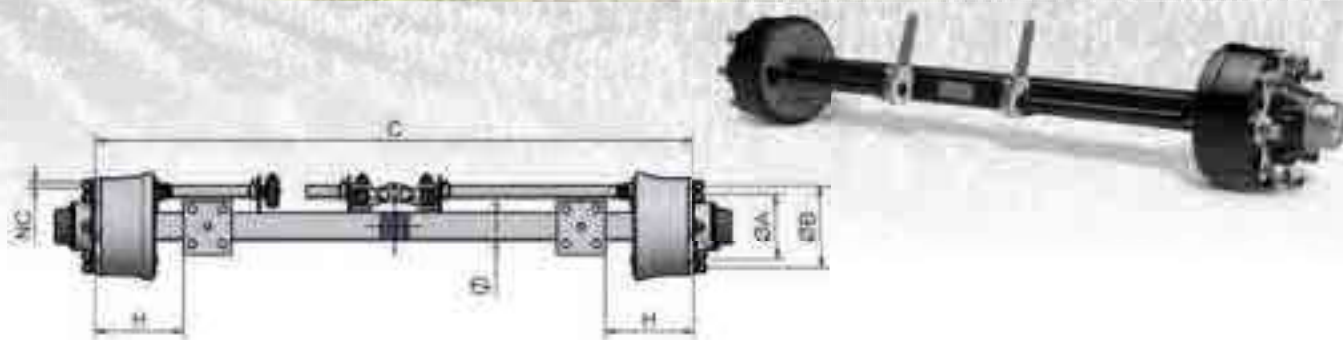
The capacities of the stubaxles correspond to the half of the capacities of the axles with same characteristics.

Die Achslast der Achsstummel entspricht der Hälfte der Achslast von Achsen des gleichen Typs.



# ASSI E SEMIASSI A SEZIONE PIENA

## AXLE AND STUBAXLE SOLID BEAM / ACHSEN UND ACHSTUMMELN MASSIVACHSKÖRPER



### ASSI CON FRENO COMBINATO

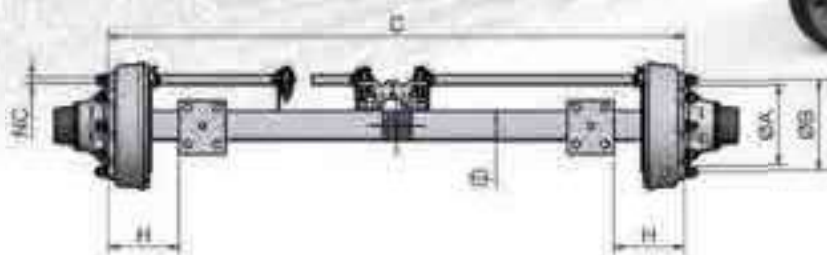
BRAKED AXLES - HUB AND DRUM / BREMSACHSEN - TROMMEL EINGEFLANSCHT

CODICE Code Code	QUADRO Square Vkt	SBALZO Overhang Überhang	PORTATA (KG) CON RUOTA ETO, R MAX. 600MM Capacity (kg) with tyre ETO, R max. 600mm Achslast (kg) mit Reifen ETO, R max. 600mm								ATTACCO p.c.d. Radanschluss		
			25 km/h		40 km/h		60 km/h		80 km/h		NC	ØA (mm)	ØB (mm)
<b>Freno / Brake / Bremse FF 306E 300x60</b>													
A50JA6FF...	50	210	3300	2800	2800	2500	2500	2250	-	-	6 M18	160	205
A55KA6FF...	55	225	4000	3500	3500	3000	3000	2750	-	-	6 M18	160	205
A60LA6FF...	60	225	4800	4200	4200	3800	3800	3500	-	-	6 M18	160	205
A70MA6FF...	70	290	6000	5100	5100	4300	4300	3850	-	-	6 M18	160	205
A70NA6FF...	70	220	7200	6700	6700	6000	6000	5400	-	-	6 M18	160	205
A70NA8FF...	70	220	7200	6700	6700	6000	6000	5400	-	-	8 M18	220	275
A80NI8FF...	80	330	7200	6700	6700	6000	6000	5400	-	-	8 M18	220	275
A80QI6FF...	80	290	8200	7400	7700	7000	7000	6300	-	-	6 M18	160	205
A80QI8FF...	80	290	8200	7400	7700	7000	7000	6300	-	-	8 M18	220	275
A90RM6FF...	90	345	10000	9000	9200	8500	8500	7700	-	-	6 M18	160	205
A90RM8FF...	90	345	10000	9000	9200	8500	8500	7700	-	-	8 M18	220	275
<b>Freno / Brake / Bremse IN 309E 300x90</b>													
A60LA6IN...	60	225	4800	4200	4200	3800	3800	3500	-	-	6 M18	160	205
A70MA6IN...	70	290	6000	5100	5100	4300	4300	3850	-	-	6 M18	160	205
A70NA6IN...	70	220	7200	6700	6700	6000	6000	5400	-	-	6 M18	160	205
A70NA8IN...	70	220	7200	6700	6700	6000	6000	5400	-	-	8 M18	220	275
A80QI6IN...	80	290	8200	7400	7700	7000	7000	6300	-	-	6 M18	160	205
A80QI8IN...	80	290	8200	7400	7700	7000	7000	6300	-	-	8 M18	220	275
A90RM6IN...	90	345	10000	9000	9200	8500	8500	7700	-	-	6 M18	160	205
A90RM8IN...	90	345	10000	9000	9200	8500	8500	7700	-	-	8 M18	220	275
<b>Freno / Brake / Bremse KF 314E 300x135</b>													
A80RM6KF...	80	240	10000	9000	9200	8500	8500	7700	7700	7000	6 M18	160	205
A80RM8KF...	80	240	10000	9000	9200	8500	8500	7700	7700	7000	8 M18	220	275
A90RMRKF...	90	345	10000	9000	9200	8500	8500	7700	7700	7000	10 M22	175	225
A90TN8KF...	90	290	11800	10600	11000	10000	10000	9000	8900	8000	8 M20	220	275
AA01R8KF...	100	335	-	-	13000	12000	11700	10800	10600	9800	8 M20	220	275
AA01RRKF...	100	335	-	-	13000	12000	11700	10800	10600	9800	10 M22	175	225

Le portate degli assali sono dipendenti dalla carreggiata, distanza degli appoggi e ruote impiegate nell'applicazione.

The capacity of the axles depend on track, spring centers and wheels used.

Die Achslasten sind abhängig von der verwendeten Spur, Federmitte und Reifen der Achsen.



## ASSI CON FRENO COMBINATO

BRAKED AXLES - HUB AND DRUM / BREMSACHSEN - TROMMEL EINGEFLANSCHT

CODICE Code Code	QUADRO Square Vkt  □ (mm)	SBALZO Overhang Überhang  H (mm)	PORTATA (KG) CON RUOTA ETO, R MAX. 600MM Capacity (kg) with tyre ETO, R max. 600mm Achslast (kg) mit Reifen ETO, R max. 600mm								ATTACCO p.c.d. Radanschluss		
			25 km/h		40 km/h		60 km/h		80 km/h		NC	ØA (mm)	ØB (mm)
<b>Freno / Brake / Bremse PG 316 300x160</b>													
A90RM8PG...	90	345	10000	9000	9200	8500	8500	7700	7700	7000	8 M18	220	275
A90MRPG..	90	345	10000	9000	9200	8500	8500	7700	7700	7000	10 M22	175	225
A90TN8PG...	90	290	11800	10600	11000	10000	10000	9000	8900	8000	8 M20	220	275
AA01R8PG...	100	335	-	-	13000	12000	11700	10800	10600	9800	8 M20	220	275
AA01RRPG...	100	335	-	-	13000	12000	11700	10800	10600	9800	10 M22	175	225
<b>Freno / Brake / Bremse NF 356E 350x60</b>													
A60LA6NF...	60	225	4800	4200	4200	3800	3800	3500	-	-	6 M18	160	205
A70MA6NF...	70	290	6000	5100	5100	4300	4300	3850	-	-	6 M18	160	205
A70NA6NF...	70	220	7200	6700	6700	6000	6000	5400	-	-	6 M18	160	205
A70NA8NF...	70	220	7200	6700	6700	6000	6000	5400	-	-	8 M18	220	275
A80QI6NF...	80	290	8200	7400	7700	7000	7000	6300	6300	5700	6 M18	160	205
A80QI8NF...	80	290	8200	7400	7700	7000	7000	6300	6300	5700	8 M18	220	275
A90RM6NF...	90	345	10000	9000	9200	8500	8500	7700	7700	7000	6 M18	160	205
A90RM8NF...	90	345	10000	9000	9200	8500	8500	7700	7700	7000	8 M18	220	275
A90TN8NF...	90	290	11800	10600	11000	10000	10000	9000	8900	8000	8 M20	220	275
<b>Freno / Brake / Bremse QF 359E 350x90</b>													
A80QI6QF..	80	290	8200	7400	7700	7000	7000	6300	6300	5700	6 M18	160	205
A80QI8QF..	80	290	8200	7400	7700	7000	7000	6300	6300	5700	8 M18	220	275
A90RM6QF..	90	345	10000	9000	9200	8500	8500	7700	7700	7000	6 M18	160	205
A90RM8QF..	90	345	10000	9000	9200	8500	8500	7700	7700	7000	8 M18	220	275
A90TN8QF..	90	290	11800	10600	11000	10000	10000	9000	8900	8000	8 M20	220	275
AA01R8QC...	100	335	-	-	13000	12000	11700	10800	10600	9800	8 M20	220	275

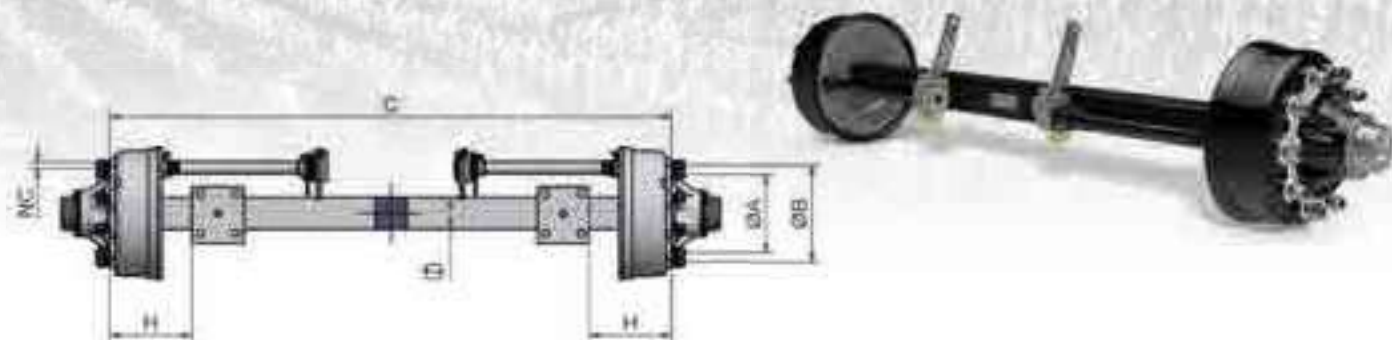
Le portate dei semiassi corrispondono alla metà delle portate degli assi di pari caratteristiche.

The capacities of the stubaxles correspond to the half of the capacities of the axles with same characteristics.

Die Achslast der Achsstummel entspricht der Hälfte der Achslast von Achsen des gleichen Typs.

# ASSI E SEMIASSI A SEZIONE PIENA

AXLE AND STUBAXLE SOLID BEAM / ACHSEN UND ACHSTUMMELN MASSIVACHSKÖRPER



## ASSI CON FRENO COMBINATO

BRAKED AXLES - HUB AND DRUM / BREMSACHSEN - TROMMEL EINGEFLANSCHT

CODICE Code Code	QUADRO Square Vkt  □ (mm)	SBALZO Overhang Überhang  H (mm)	PORTATA (KG) CON RUOTA ETO, R MAX. 600MM Capacity (kg) with tyre ETO, R max. 600mm Achslast (kg) mit Reifen ETO, R max. 600mm								ATTACCO p.c.d. Radanschluss		
			25 km/h		40 km/h		60 km/h		80 km/h		NC	ØA (mm)	ØB (mm)
Freno / Brake / Bremse <b>TC 408E 400x80</b>													
A80QI8TC...	80	290	8200	7400	7700	7000	7000	6300	6300	5700	8 M18	220	275
A90RM6TC...	90	345	10000	9000	9200	8500	8500	7700	7700	7000	6 M18	160	205
A90RM8TC...	90	345	10000	9000	9200	8500	8500	7700	7700	7000	8 M18	220	275
A90TN8TC...	90	290	11800	10600	11000	10000	10000	9000	8900	8000	8 M20	220	275
A90TN1TC...	90	290	11800	10600	11000	10000	10000	9000	8900	8000	10 M22	280	335
AA01R8TC...	100	335	-	-	13000	12000	11700	10800	10600	9800	8 M20	220	275
AA01R1TC...	100	335	-	-	13000	12000	11700	10800	10600	9800	10 M22	280	335
Freno / Brake / Bremse <b>VG 406HP 406x120</b>													
AA01R8VG...	100	335	-	-	13 000	12 000	11 700	10 800	10 600	9 800	8 M20	220	275
AA01R1VG...	100	335	-	-	13 000	12 000	11 700	10 800	10 600	9 800	10 M22	280	335
Freno / Brake / Bremse <b>VC 412E 406x120</b>													
A90TN8VC...	90	290	11800	10600	11000	10000	10000	9000	8900	8000	8 M20	220	275
AA01R8VC...	100	335	-	-	13000	12000	11700	10800	10600	9800	8 M20	220	275
AA01R1VC...	100	335	-	-	13000	12000	11700	10800	10600	9800	10 M22	280	335
Freno / Brake / Bremse <b>WC 414E 406x140</b>													
AA01R1WC...	100	335	-	-	13000	12000	11700	10800	10600	9800	10 M22	280	335
AA5ZA1WC...	150	745	21400	19200	20000	18000	18000	16200	16200	14500	10 M22	280	335
Freno / Brake / Bremse <b>YC 4220E 420x200</b>													
AA5ZA1YC...	150	745	21400	19200	20000	18000	18000	16200	16200	14500	10 M22	280	335
AA5WA1YC...	150	450	35000	31500	33000	30000	30000	27000	26700	24000	10 M24	280	335
Freno / Brake / Bremse <b>ZE 5218E 520x180</b>													
AA5ZA1ZE...	150	745	21400	19200	20000	18000	18000	16200	16200	14500	10 M22	280	335
AA5WA1ZE...	150	450	35000	31500	33000	30000	30000	27000	26700	24000	10 M24	280	335

Le portate degli assali sono dipendenti dalla carreggiata, distanza degli appoggi e ruote impiegate nell'applicazione.

The capacity of the axles depend on track, spring centers and wheels used.

Die Achslasten sind abhängig von der verwendeten Spur, Federmitte und Reifen der Achsen.